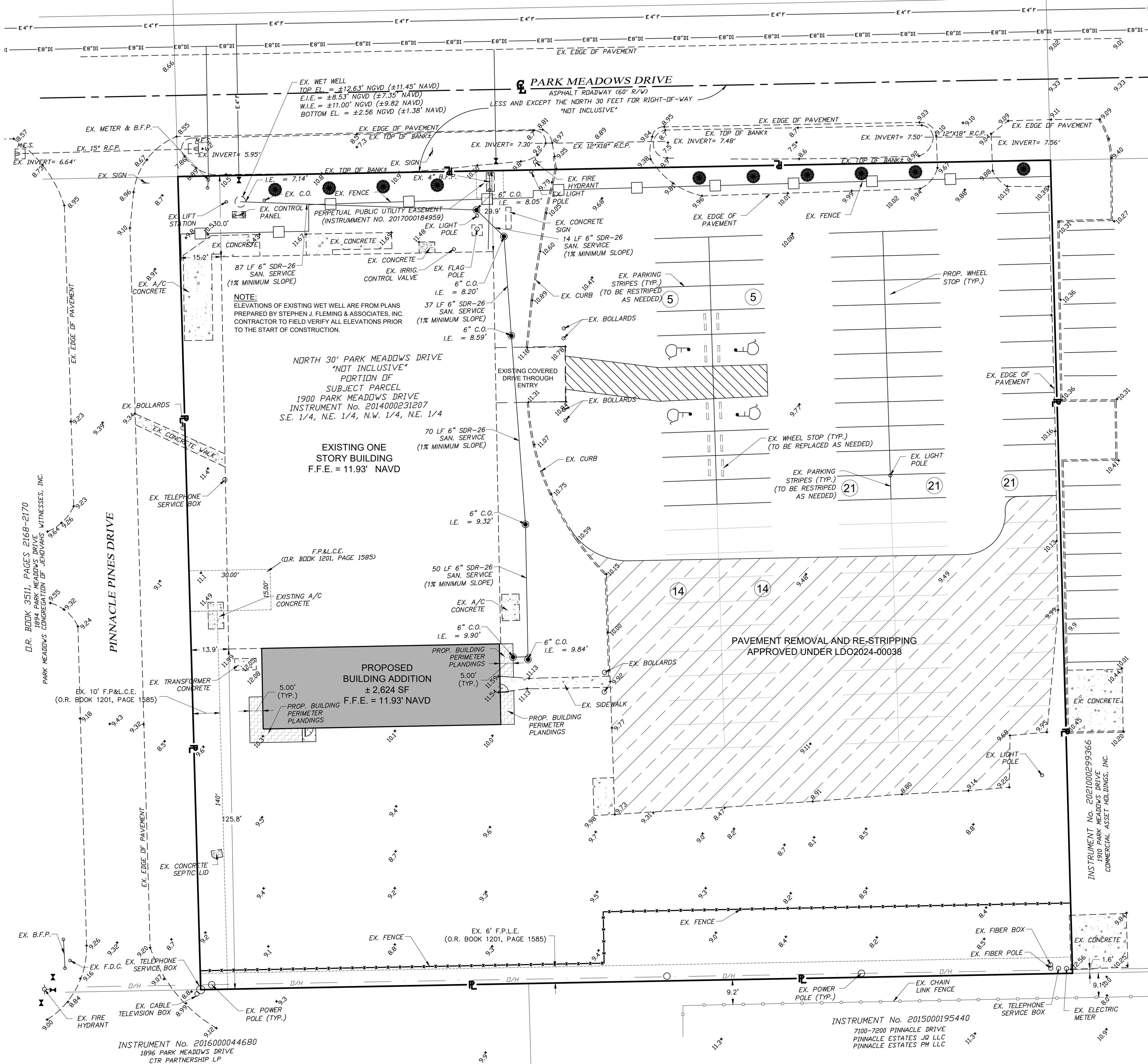


0 20 40 60
GRAPHIC SCALE 1" = 20'



GENERAL LANDSCAPE NOTES:

- 1) TREES AND SHRUBS FOR THE REQUIRED LANDSCAPE BUFFERS SHALL BE INSTALLED PER THE LEE COUNTY LAND DEVELOPMENT CODE.
- 2) THE LANDSCAPE CONTRACTOR SHALL BE RESPONSIBLE FOR LOCATING ALL UNDERGROUND AND OVERHEAD UTILITIES AND ALL SITE CONDITIONS PRIOR TO THE START OF CONSTRUCTION.
- 3) IT SHALL BE THE RESPONSIBILITY OF THE LANDSCAPE CONTRACTOR TO FINE GRADE ALL LANDSCAPE AREAS: ELIMINATING ALL BUMPS, DEPRESSIONS, STICKS, STONES, AND OTHER DEBRIS TO THE SATISFACTION OF THE LANDSCAPE ARCHITECT. ALL INORGANIC DEBRIS THAT MAY DAMAGE OR INHIBIT THE GROWTH OF PLANT MATERIAL WILL BE REMOVED FROM ALL PLANTING BEDS. SOIL SHALL NOT BE INSTALLED.
- 4) ALL BASE ROCK SHALL BE REMOVED FROM PLANTING AREAS AND REPLACED WITH CLEAN PLANTABLE SOIL.
- 5) HEDGE SHRUBS MUST BE A MINIMUM OF 24" IN HEIGHT, 3 GALLON CONTAINER SIZE, AND SPACES 18" TO 36" ON CENTER. THEY MUST BE 36" IN HEIGHT WITHIN 12 MONTHS OF TIME OF PLANTING AND MAINTAINED IN PERPETUITY AT A HEIGHT OF NO LESS THAN 36".
- 6) THE CONTRACTOR SHALL BE RESPONSIBLE FOR CONDUCTING A COMPREHENSIVE MATERIAL TAKE-OFF. IF THE DISCREPANCY OCCURS BETWEEN THE PLANTING SCHEDULE AND THE DRAWINGS, THE DRAWINGS WILL TAKE PRECEDENCE.
- 7) ALL PERVIOUS AREA NOT DESIGNED FOR LANDSCAPING OR MULCH SHALL BE SODDED, INCLUDING ALL AREAS WITHIN THE RIGHT-OF-WAY. ALL SODDED AREAS SHALL BE LAYED COMPLETE, CONGRUENT, AND EVEN WITH ALL TRANSITIONS.
- 8) THE CONTRACTOR SHALL BE RESPONSIBLE FOR PROVIDING WATER TO ALL PLANT MATERIAL THROUGH FINAL ACCEPTANCE OF THE PROJECT. THE CONTRACTOR SHALL ALSO PROVIDE MAINTENANCE TO ALL PLANT MATERIAL THROUGH FINAL ACCEPTANCE. STRESSED MATERIALS WILL NOT BE APPROVED AT FINAL ACCEPTANCE.
- 9) THE CONTRACTOR SHALL BE RESPONSIBLE FOR INSTALLING THE SPECIFIED MATERIALS AT THE SPECIFIED LOCATIONS. ANY ALTERATIONS HERE TO SHALL BE AT THE CONTRACTOR'S RISK. LANDSCAPE MATERIAL MUST MEET THE REQUIREMENTS SET FORTH BY THE LEE COUNTY LAND DEVELOPMENT CODE.
- 10) WHERE NECESSARY, ROOT BARRIERS SHALL BE INSTALLED NEXT TO ANY EXISTING OR PROPOSED SIDEWALKS.
- 11) TREES WITHIN THE RIGHT-OF-WAY BUFFER MUST BE APPROPRIATELY SIZED IN MATURE FORM SO THAT CONFLICTS WITH OVERHEAD UTILITIES, LIGHTING, AND SIGNS ARE AVOIDED.
- 12) ALL PLANT MATERIALS AND TREES SHALL MEET OR EXCEED THE STANDARDS FOR FLORIDA NO.1 AS SPECIFIED IN GRADES AND STANDARDS FOR NURSERY PLANTS, PART 1 2963, AND PART II, STATE OF FLORIDA, DEPARTMENT OF AGRICULTURE, TALLAHASSEE, AS AMENDED, OR EQUAL AS APPROVED BY THE DOD DIRECTOR.
- 13) A TEMPORARY GROUND SOAKER PIPING IRRIGATION SYSTEM SHALL BE INSTALLED FOR ALL INSTALLED BUFFER PLANTINGS USING POTABLE WATER.
- 14) A 2" MINIMUM LAYER, AFTER WATERING-IN, OF MULCH MUST BE PLACED AND MAINTAINED AROUND ALL NEWLY INSTALLED TREES, SHRUBS AND GROUND COVER PLANTINGS. EACH TREE MUST HAVE A RING OF MULCH NO LESS THAN 24 INCHES BEYOND ITS TRUNK IN ALL DIRECTIONS. THE USE OF CYPRESS MULCH IS STRONGLY DISCOURAGED.
- 15) THE DEVELOPMENT AREA WILL BE MAINTAINED FREE FROM INVASIVE EXOTIC PLANTS IN PERPETUITY.

LEGEND:

- BUFFER TREE
- COCOPLUM (24" OA HT., 3 GAL., 3' O.C.)

LANDSCAPE REQUIREMENTS:

NORTH PROPERTY LINE (ADJACENT TO PARK MEADOWS DRIVE):
TYPE "D" BUFFER REQUIRED (15')
TREES: 5 TREES PER 100 LF
SHRUBS: HEDGE(2)

TREES:
265 L.F. X (5 TREES/100 L.F.) = 13 TREES REQUIRED
10 TREES PROVIDED*

*TOTAL NUMBER OF TREES HAS BEEN PROVIDED TO THE MAXIMUM EXTENT POSSIBLE.

2.HEDGES MUST BE PLANTED IN DOUBLE STAGGERED ROWS AND BE MAINTAINED 50 AS TO FORM A 36-INCH HIGH (F-TYPE) BUFFERS MUST BE 48 INCHES AT INSTALLATION AND BE MAINTAINED AT 60 INCHES HIGH) CONTINUOUS VISUAL SCREEN WITHIN ONE YEAR AFTER TIME OF PLANTING.

PARKING CALCULATIONS:

LEE COUNTY LAND DEVELOPMENT CODE SECTION 34-2020 - REQUIRED PARKING SPACES

DAY CARE CENTERS:
2 SPACES PER EMPLOYEE

15 EMPLOYEES X 2 SPACE/EMPLOYEE = 30 SPACES

TOTAL REQUIRED PARKING = 30 SPACES (INCLUDES 2 HANDICAP SPACES)

TOTAL PROVIDED PARKING = 101 SPACES (INCLUDES 4 HANDICAP SPACES)

LANDSCAPE REQUIREMENTS:

LEE COUNTY LAND DEVELOPMENT CODE SECTION 10-416 - LANDSCAPE STANDARDS SECTION 10-420 - PLANT MATERIAL STANDARDS

10-416(b) - BUILDING PERIMETER PLANTINGS
ALL NEW DEVELOPMENT IN COMMERCIAL ZONING DISTRICTS AND COMMERCIAL COMPONENTS OF PLANNED DEVELOPMENT DISTRICTS AND DRIS MUST PROVIDE BUILDING PERIMETER PLANTINGS EQUAL TO TEN PERCENT OF THE PROPOSED BUILDING GROSS GROUND LEVEL FLOOR AREA. THESE PLANTING AREAS MUST BE LOCATED ABUTTING THREE SIDES OF THE BUILDING WITH EMPHASIS ON THE SIDES MOST VISIBLE TO THE PUBLIC, NOT INCLUDING THE LOADING AREA.

THE PERIMETER PLANTING AREAS MUST CONSIST OF LANDSCAPE AREAS, RAISED PLANTERS OR PLANTER BOXES THAT ARE A MINIMUM OF FIVE FEET WIDE. THESE LANDSCAPE AREAS MUST INCLUDE SHRUBS AND GROUND COVER PLANTS WITH A MINIMUM OF 50 PERCENT COVERAGE OF THE LANDSCAPE AREA AT THE TIME OF PLANTING. TREES AND SHRUBS MUST MEET THE SIZE REQUIREMENTS OF SECTION 10-420(D). GROUND COVER PLANTS MUST BE A MINIMUM ONE-GALLON CONTAINER SIZE. GENERAL TREES MAY BE PLANTED WITHIN THE BUILDING PERIMETER PLANTING AREAS, ESPECIALLY EFFECTIVE ARE CLUSTERS (THREE OR MORE) OF SABAL PALMS. TURFGRASS IS DISCOURAGED AND IS LIMITED TO TEN PERCENT OF THE LANDSCAPE AREA. WATER MANAGEMENT AREAS MAY NOT BE A PART OF THIS FIVE-FOOT PLANTING AREA. PEDESTRIAN ACCESSWAYS MAY CROSS AND LOADING AREAS MAY BE PLACED IN THE PERIMETER PLANTING AREA BUT MAY NOT BE USED TO MEET MINIMUM PLANTING AREA OR OPEN SPACE REQUIREMENTS.

10-420(d) - SHRUBS AND HEDGES
SHRUBS MUST BE A MINIMUM OF 24 INCHES (48 INCHES FOR TYPE F BUFFERS) IN HEIGHT, AT TIME OF PLANTING. SAW PALMETTOS (SERENOA REPENS) AND COONIES (ZAMIA FLORIDANA) MAY BE USED AS SHRUBS, PROVIDED THEY ARE 12 INCHES IN HEIGHT AT TIME OF PLANTING. ALL SHRUBS MUST BE A MINIMUM THREE-GALLON CONTAINER SIZE AND BE SPACED 18 TO 36 INCHES ON CENTER. THEY MUST BE AT LEAST 36 INCHES (60 INCHES FOR TYPE F BUFFERS) IN HEIGHT WITHIN 12 MONTHS OF TIME OF PLANTING AND MAINTAINED IN PERPETUITY AT A HEIGHT OF NO LESS THAN 36 INCHES (60 INCHES FOR TYPE F BUFFERS).

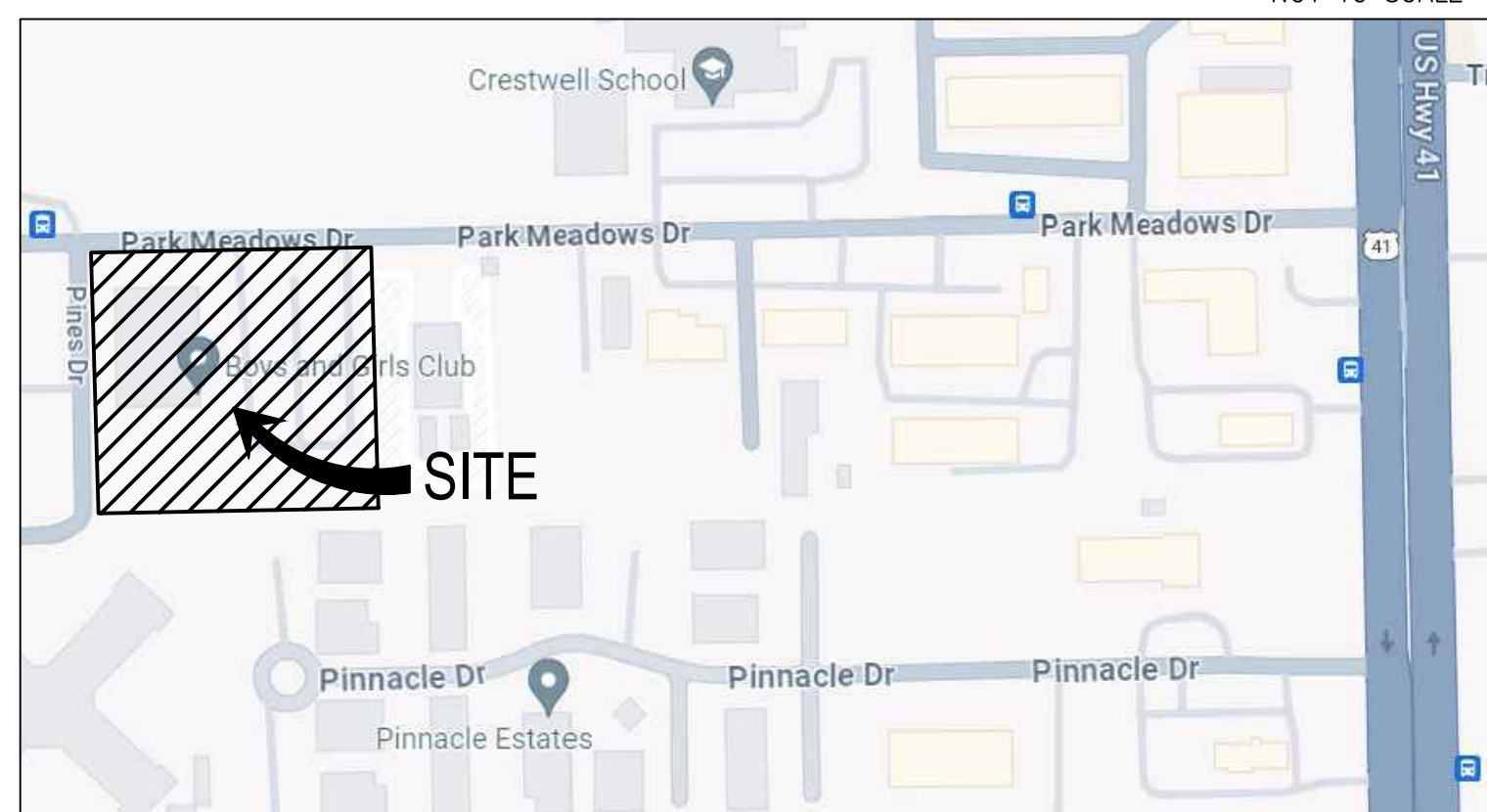
FLOOD ZONE:

PER THE FLOOD INSURANCE MAP FEMA PANEL 12071C 0409G, DATED NOVEMBER 17, 2022, THE SITE IS IN ZONE X.

DATUM:

ALL ELEVATIONS ARE BASED ON NAVD 88 (NGVD 29 - 1.18 FT = NAVD 88)

EXAMPLE:
5 FT NGVD - 1.18 = 3.82 NAVD



LOCATION MAP

SECTION 14, TOWNSHIP 45 SOUTH, RANGE 24 EAST
LEE COUNTY, FLORIDA

ALL ELEVATIONS ARE BASED ON NORTH AMERICAN VERTICAL DATUM OF 1988

PREPARED FOR:
BOYS & GIRLS CLUBS OF LEE COUNTY
9371 CYPRESS LAKE DR, UNIT 5
FORT MYERS, FLORIDA 33919

BANKS ENGINEERING
Professional Engineers, Planners, & Land Surveyors
Serving The State Of Florida

10511 SIX MILE CYPRESS PARKWAY
FORT MYERS, FLORIDA 33966
PHONE: (239) 939-5490 FAX: (239) 939-2523
ENGINEERING LICENSE # EB 6469
SURVEY LICENSE # LB 6690
WWW.BANKSENG.COM

KENNETH W. KELLUM, P.E.
P.E. #47657

DATE	PROJECT	DRAWING	DESIGN	DRAWN	CHECKED	SCALE	SHEET
12/1/2023	5000	_SP	TRL	NFK	TRL	1"=20'	01

NO.	DATE	REVISED PER COUNTY COMMENTS	REVISION DESCRIPTION	NFK BY
1	5/17/2024	REVISED PER COUNTY COMMENTS		NFK

S:\JAMES\5000\5000 - BOYS & GIRLS CLUB OF LEE COUNTY\5000\5000.DWG 5/17/2024 8:49 AM NFK 10/10/25